

許文翰 終身特聘教授

Lifetime Distinguished  
Professor

Tony Wen-Hann Sheu

工程科學與海洋工程學系, 國立臺灣大學  
應用數學科學研究所, 國立臺灣大學  
高效能與科學計算技術研究中心, 國立臺灣大學  
理論科學研究中心(CASTS), 國立台灣大學



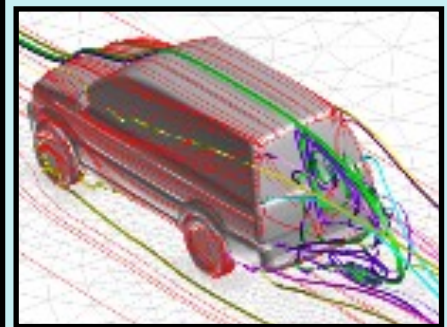
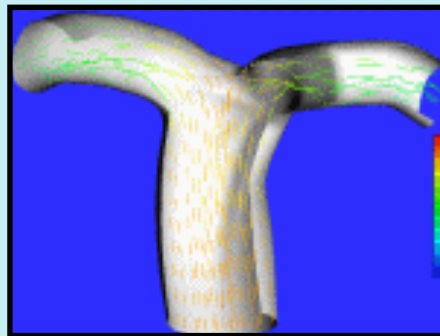
108年02月27日(三) 14:30 應用數學系多媒體教室 (理408)

## High performance computing in scientific computing and cardiovascular simulation (SCCS) laboratory

**Abstract:** An overview of the high performance computing works conducted in SCCS will be given. Our aim is to give audience a brief introduction of what we have done in the past, our current research works and some future works under current planning. It is best hoped to initialize some possible joint researches with the faculties in NUK.

### Research Interest:

- Computational fluid dynamics, acoustics, heat/mass transfer
- Computational physics
- Surgical planning studies
- High performance computing
- Hemodynamics



### Awards and Honors: (selected)

- Special researcher award of National Science Council of R. O. C. (2012)
- Taiwan-France Award for Science and Technology (2011)
- Research fellow of National Science Council of R. O. C. (2006-date)